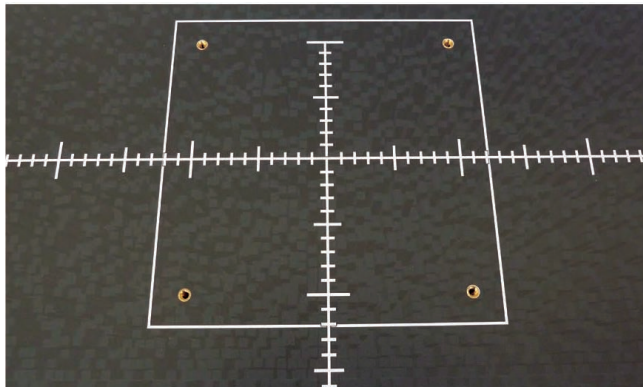
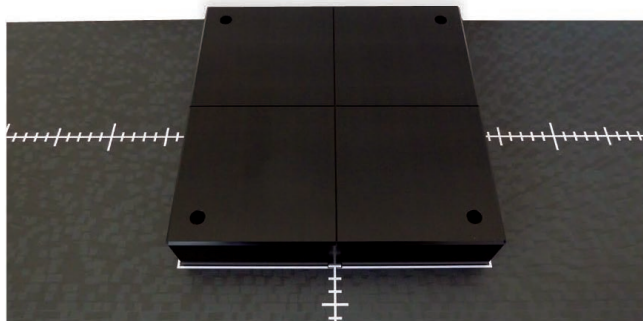




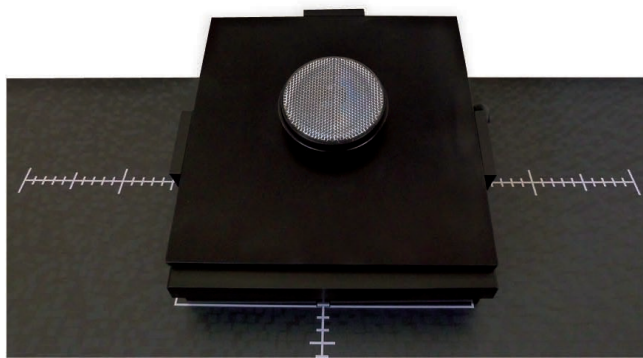
Typical test samples



Test table top



Adapter plate



Adapter with calibration reflector

Technical specification

RC 100 Online Retroreflectometer	
Instrument type	RC 100 Reflex Checker
Concept	Stand alone unit independent from PC
Measurement principle	Relative measurement against reference sample, geometry compensation by separate calibrations for each reflector type
Control	Handheld operation terminal with touchscreen and easy menu guidance
Measuring receiver	V(λ)- matched silicon detector
Reference receiver	V(λ)- matched silicon detector
Illumination angle	0°
Observation angle	20 angular minutes (0.333°)
Field of view	Approx. Ø 90 mm
Power supply	90 V...265 V, 50 Hz...60 Hz
Power consumption	Max. 80 W
Ambient temperature	+10°C...+40°C
Relative humidity	10...90%, non condensing
Dimension	W 1000 mm x H 2330 mm x D 600 mm
Weight	Approx. 40 kg
PC interface	RS 232 (to read up values via terminate programm for statistical analysis)
Options	Adapter base plate to fix individually designed test adapters. Individually designed adapters

Order Information

Article No.	Article description
RC 100-100	RC 100 basic instrument as described above
RC 100-200	Adapter base plate to fix individually designed test adapters
RC 100-XXX	Individually designed adapter based on technical sketches provided by client and calculated based on design and manufacturing effort
Online – Retro-reflectometer RC 100 Reflex Checker with light source, measuring optics and handheld control unit, RS 232 serial interface. Test table for positioning an adapter plate for adapters provided by the client. Instruction manual is included.	

We bring quality to light.



KONICA MINOLTA Group

Kaiserin-Augusta-Allee 16-24
10553 Berlin, Germany
Tel.: +49 30 34 99 41-0
Fax: +49 30 34 55 054
info_berlin@instrumentsystems.com
www.instrumentsystems.com/optronik