

## Technical specifications

Heat-Cool System	DMS 803, DMS 505, DMS 201		DMS 903
	HCS-3	HCS-3B	HCS-4
<b>Temperatures</b>			
Temperature range	-35 °C to +85 °C	-40 °C to +100 °C	-35 °C to +85 °C
Temperature accuracy	± 1 °C	± 1 °C	± 1 °C
Temperature resolution	0.1 °C	0.1 °C	0.1 °C
Typical transition time <sup>1)</sup>	ambient to -35°C: 30 min ambient to +85°C: 45 min	ambient to -40°C: 30 min ambient to +100°C: 45 min	ambient to -35°C: 40 min ambient to +85°C: 80 min
on DUT properties			
<b>Dimensions</b>			
Usable internal diameter	365 mm / 14"	370 mm / 14"	917 mm / 36"
Usable internal height	29 mm	41 mm max. 146 mm with extension	110 mm without xy-stage max. 180 mm with extension 70 mm with xy stage
<b>Travel range</b>			
Theta inclination	0° to 60°	0° to 60°	0° to 70°
Phi rotation	0° to 360°	0° to 360°	0° to 360°
X- and Y-axis of base mechanism	-5 mm to 5 mm	-5 mm to 5 mm	-5 mm to 5 mm
x- and y-axis of internal stage	-	-50 mm to 50 mm	300 mm x-axis and 225 mm y-axis
z-axis of internal stage	-	16 mm	-

<sup>1)</sup> For empty chamber.

## 07 \\ SCAN 300 Scanning stage

The SCAN 300 x-y scanning stage is an optional accessory for use with DMS 803, DMS 505 and DMS 201. This motorized positioning stage extends the existing x-y travelling range of the basic mechanism to 300 x 300 mm, allowing full scans of displays up to 16". With the manual DMS 201 system it enables motorized positioning and automated scanning.

The SCAN 300 is integrated into the DMSControl software to maintain the usual comfort level of fully automated measurements of any type of display, optical components, back light units, etc.

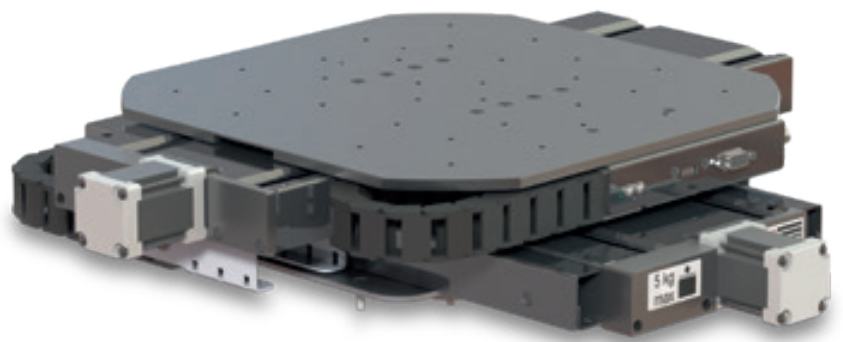


Fig. 9: The motorized SCAN 300 extends the field of measurement for displays up to 16".